



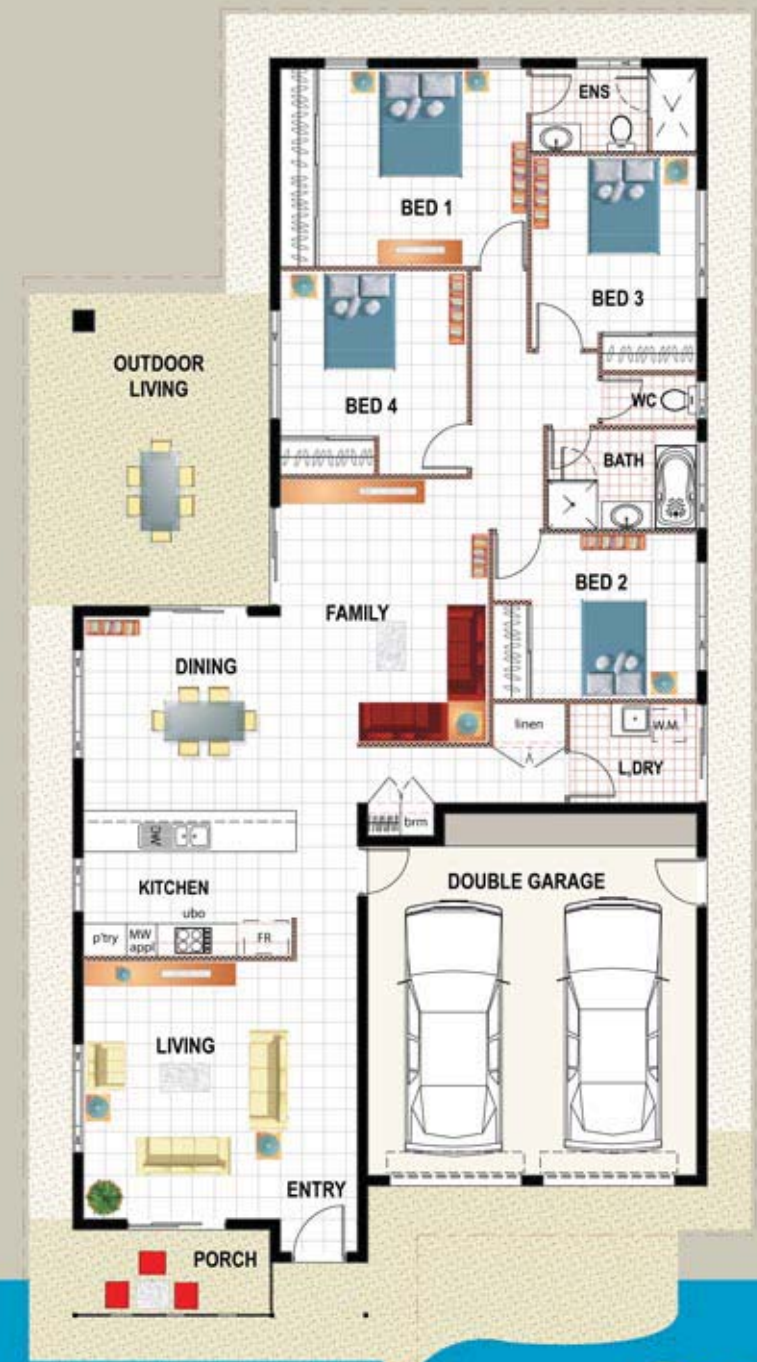
Alternate Facades Available

# The Elizabeth

## HOUSE

Floor Area 167m<sup>2</sup>  
 Carport/Porch 49m<sup>2</sup>  
 Outdoor Living 20m<sup>2</sup>

TOTAL AREA 236m<sup>2</sup>



PTM HOMES Pty Ltd  
 ACN: 087 318 058 ABN: 86 087 318 058  
 GPO Box 4310, Darwin, NT 0801  
 139 McKinnon Rd Pinelands NT

Tel: 8932 85 90

# The Elizabeth

Graphics and Design by Keith Smith Consulting

